

# metec

pressparts



**development**  
**toolmaking**  
**production**



● Peter Martin  
managing director

● Günther Martin  
company's founder

● Maren Caroline  
Martin

● Helga Martin  
co-founder

## Basic principles

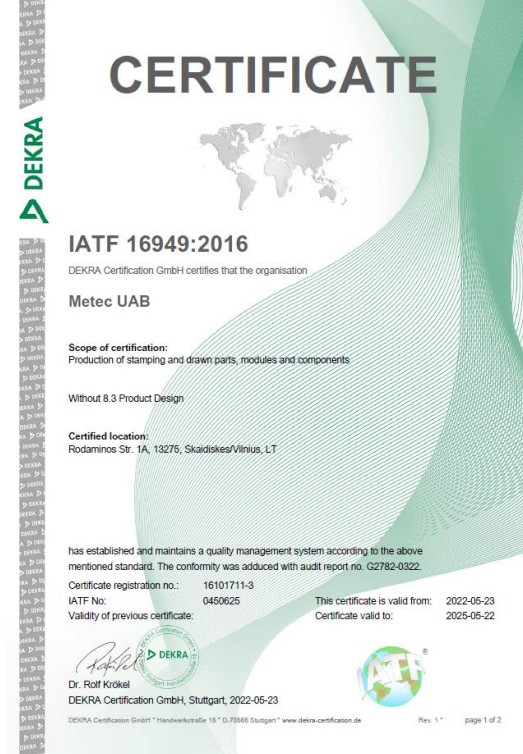
Family-owned enterprise

- Independence
- Growth with own energy
- Continuous development

## Aims

Continuity

- Highest and constant quality
- Leading know-how
- Worldwide customer relationships



**ISO 9001:2015 certified since 2006**  
**ISO 14001:2015 certified since 2018**  
**IATF 16949 certified since 2022**

**August 2005:**

start up technical development, construction, tool making, high and low volume series production

**June 2006:**

certified to ISO 9001:2000

**January 2011:**

owned by Martin International Holding GmbH, became a member of Martin Group

**December 2018:**

certified to ISO 14001:2015

**March 2022:**

certified to IATF 16949

<b>Production area:</b>	2.200 m <sup>2</sup>
<b>Turnover:</b>	4.1 Mio EUR (2021)
<b>Number of employees:</b>	113



PORSCHE



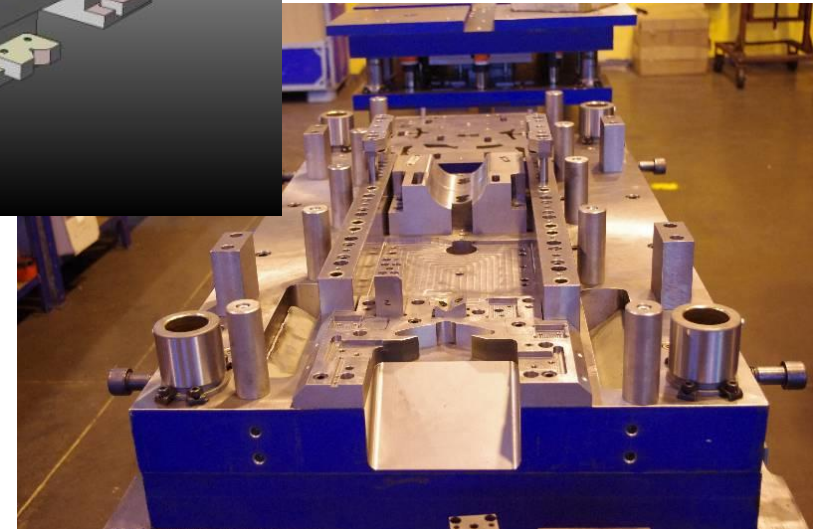
Mercedes-Benz



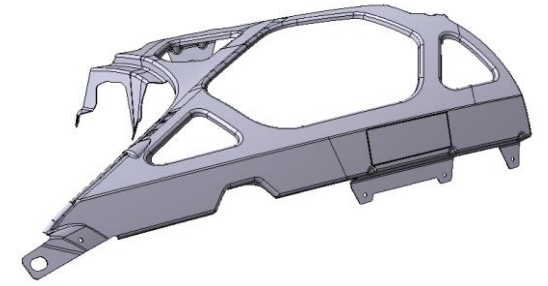
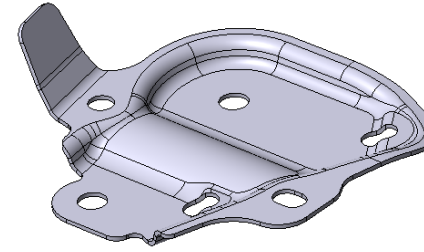
BENTLEY

## Everything from one source

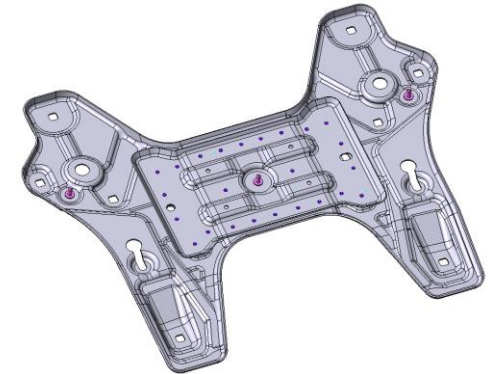
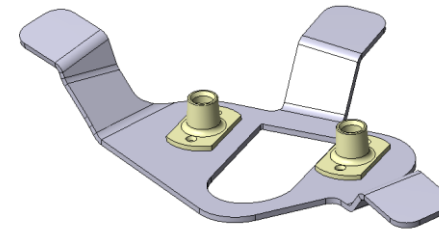
- Design
- Prototyping
- Tool construction
- Logistics
- Quality
- Pre-production batch
- High and small volume series



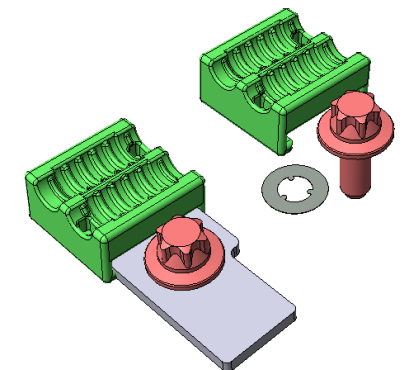
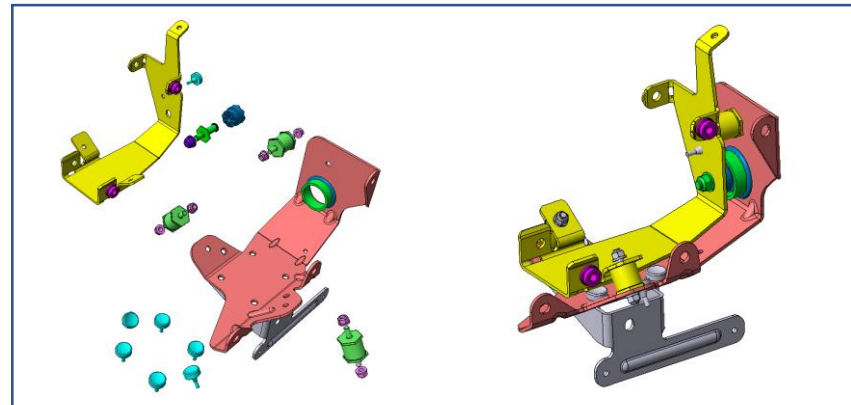
- Stamped and formed parts



- Welded and riveted components



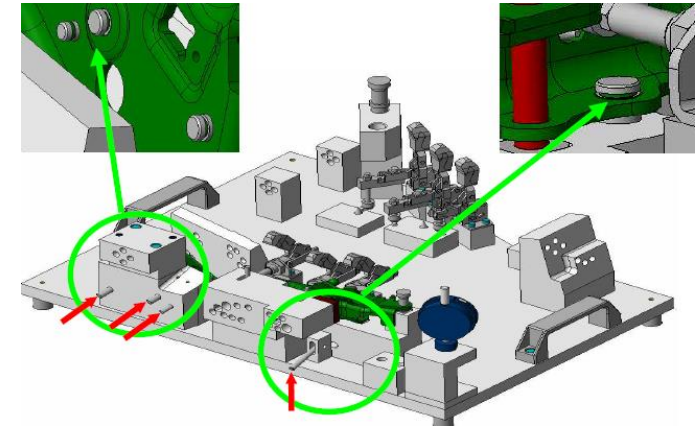
- Assembly





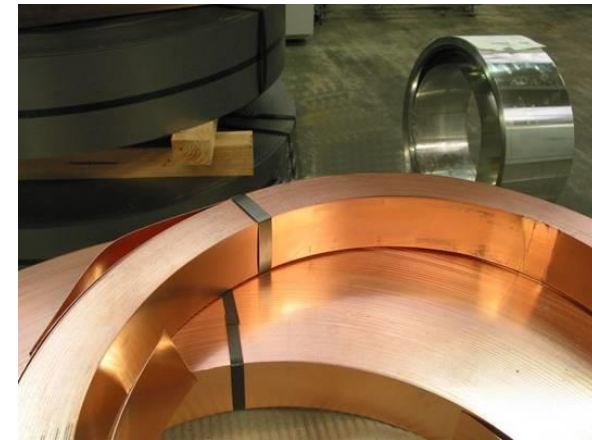
## We design and manufacture

- devices
- assembly fixtures  
(for example specialized welding units)
- control devices / recording units
- gages / gauges



## Metal for every requirement

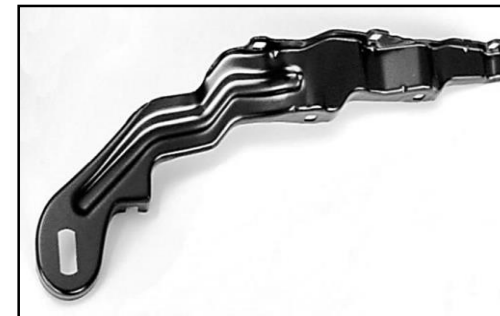
- materials
  - steel
  - aluminium
  - stainless steel
  - copper
- dimensions
  - range up to 540 mm
  - thickness of material: 0,8 - 4,0 mm



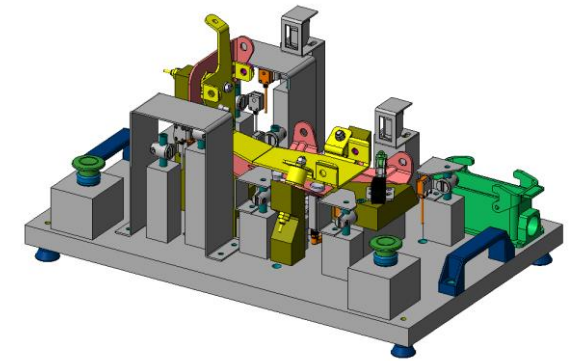
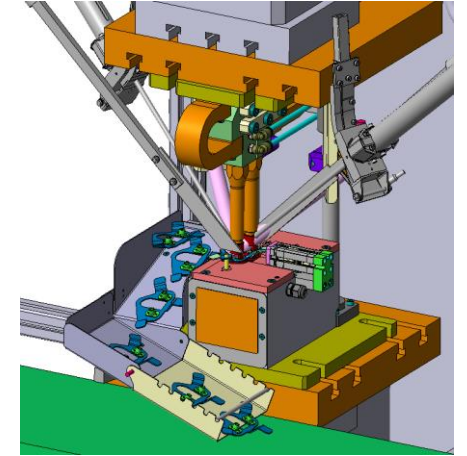
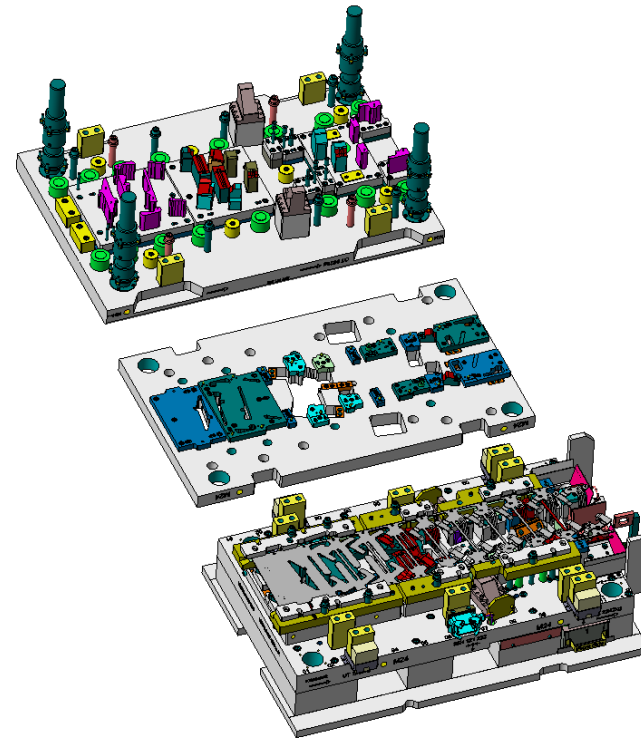
## Anticorrosive and optical treatment

### Surfaces

- KTL
- zinc-nickel
- zinc coating
- powder coating
- phosphating
- anodizing
- rotofinishing



- efficient processing of requests
- concept development
- project planning (dates, costs, quality)
- design
- VISI CAD software
- managing the series start-up



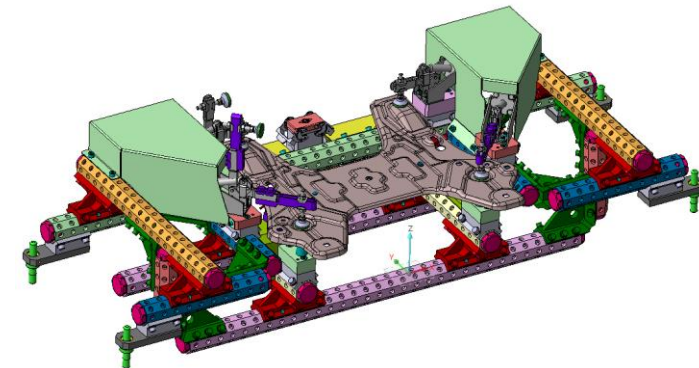
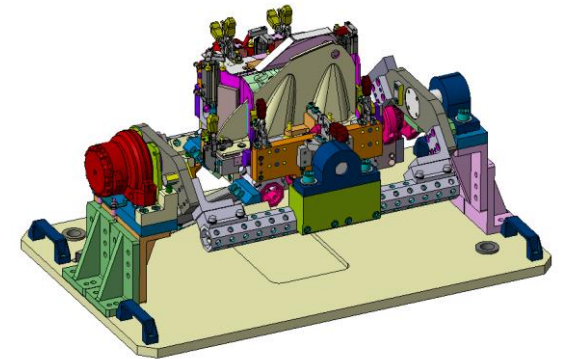
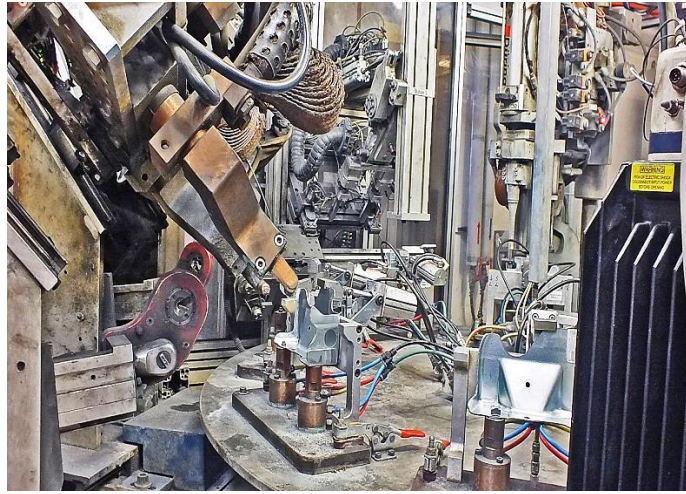
- CNC milling machines
- wire cutting machines
- turning machines
- grinding machines
- drilling machines

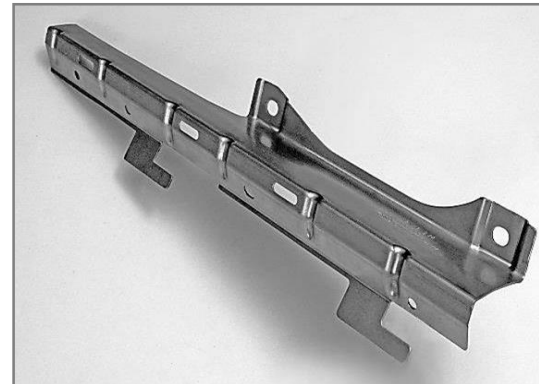
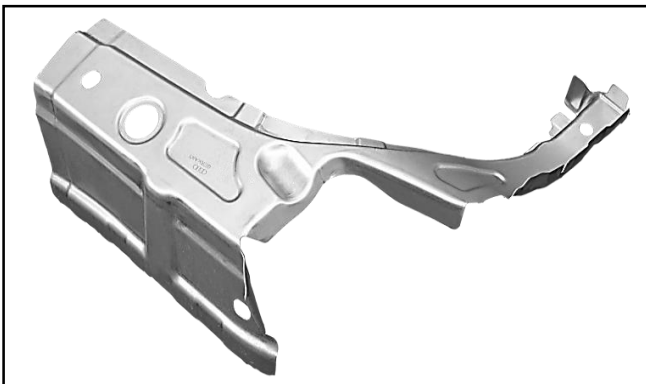
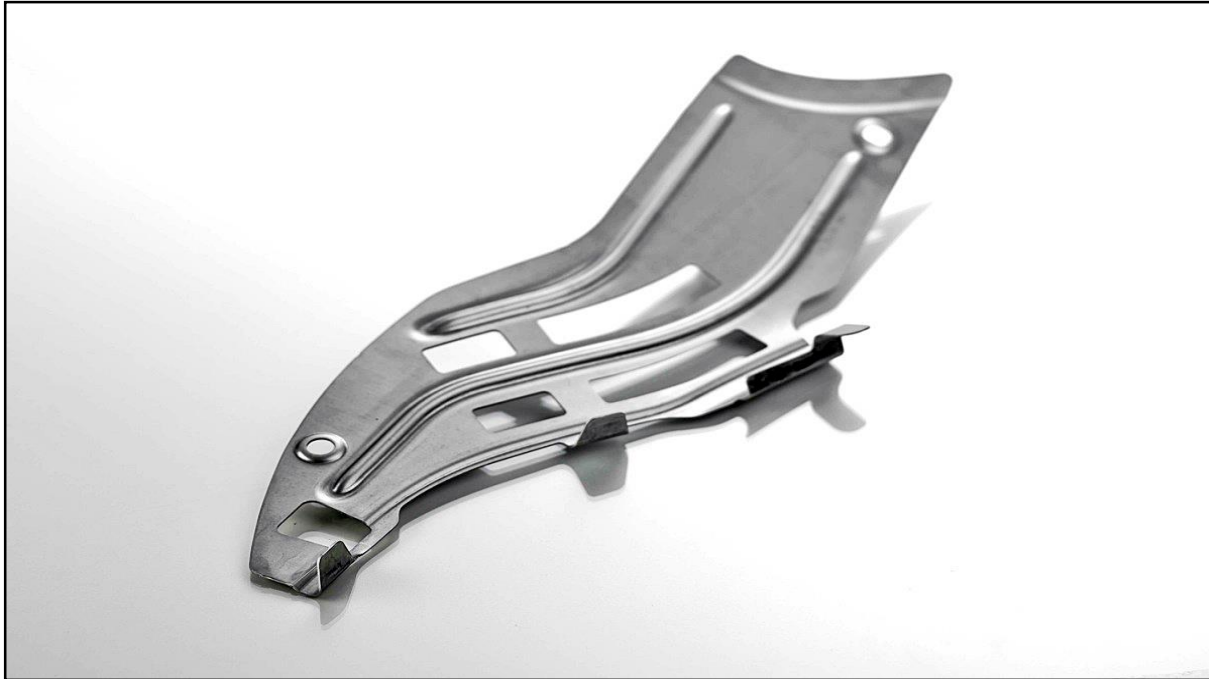


- 2 automatic presses 250-400 tons
  - 4 hydraulic presses 250-400 tons
  - 7 eccentric presses 60-200 tons
- ESTIMATED**
- 2023 automatic press 400 tons

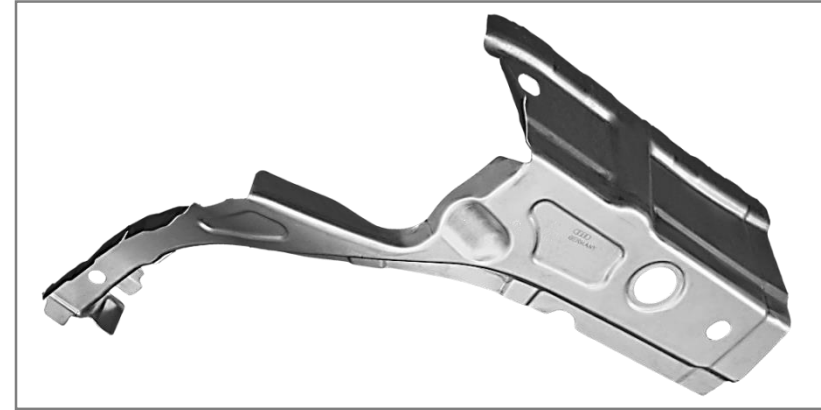


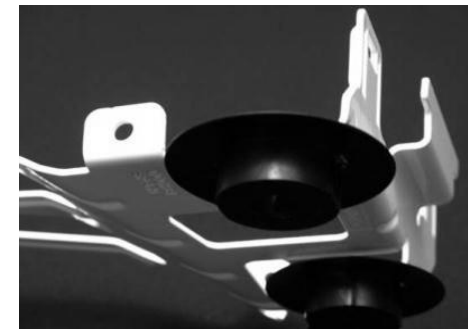
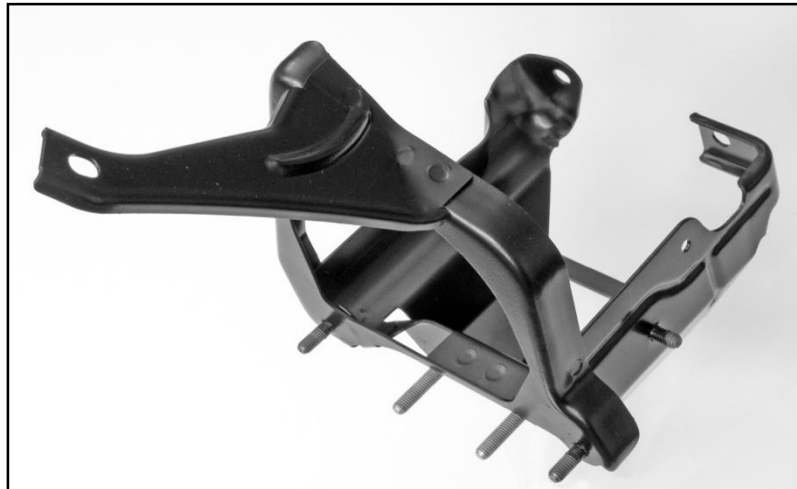
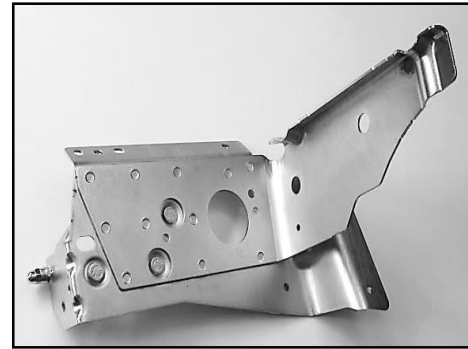
- spot welding
- robot welding (MIG/MAG, spot)
- manual welding
- resistance welding
- MIG/MAG welding
- PEM fastener-insertion press







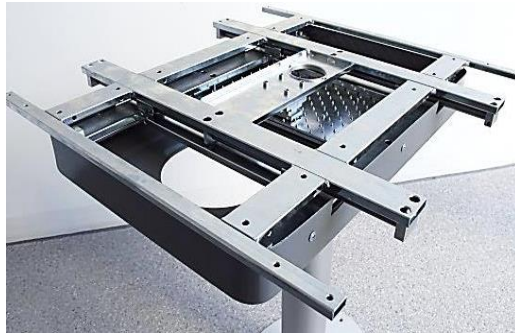




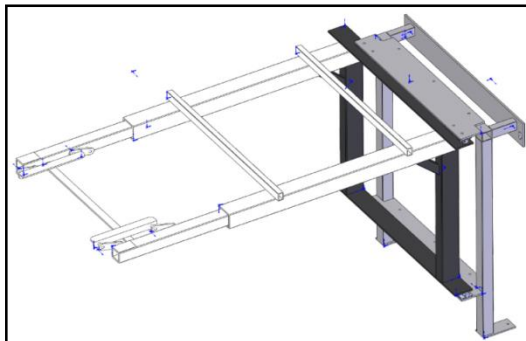
## Table adjustment systems



Shift mechanisms



Extendable table





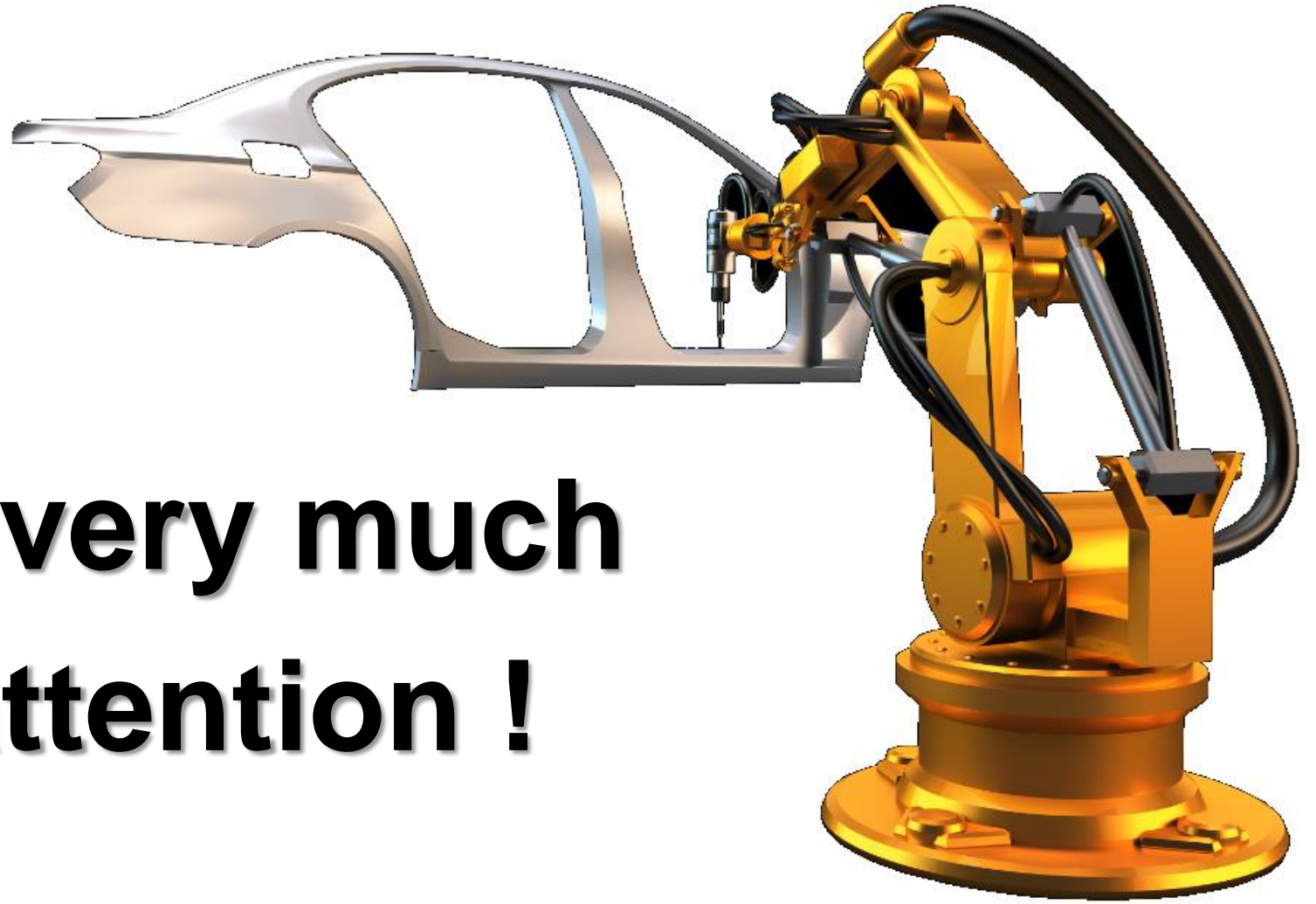
- Estimated 2027
- Plot area - 88.700 m<sup>2</sup>
- Production area – 7.000 m<sup>2</sup>



- **Production**
- **Design**
- ▲ **Tool construction**

**Tel:** +370 5 2350999  
**Fax:** +370 5 2159922  
**Email:** info@metec.lt  
**Website:** www.metec.lt

**Address:** UAB „METEC“  
Rudaminos g.1a  
13275 Skaidiškų k.  
Vilniaus r.  
Lietuva(Lithuania)



**Thank you very much  
for your attention !**