



Continental Automotive Lithuania

Welcome



We Are Shaping the Future of Mobility.



Our Strategy

CREATING VALUE FOR A BETTER TOMORROW.

Our technologies. Your solutions.
Powered by the passion of our people.



Continental Group

Leading the Way for Your Mobility



A leading player
in **autonomous
mobility**

First to market
with **software-
defined**
vehicle architecture

Industry-
benchmark
operational efficiency
in **Tires**

~193,000
talented and
dedicated
employees

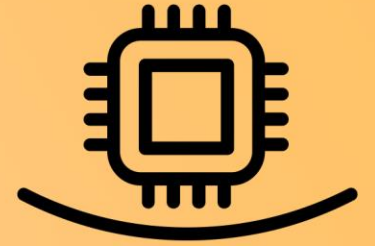
New horsepower for **safe, autonomous, connected and sustainable mobility**

> **1 billion** vehicles are already equipped with Continental software

≈ **50 million** vehicles have been connected with Continental technologies since 1996

> **20 new models** worldwide will be fitted with high-performance computers from Continental by the end of 2022

1/3 of new cars in Europe run on Continental tires



THERE'S A LOT OF CONTINENTAL IN THE NEW ID.4

All of the components at a glance:

VITESCO TECHNOLOGIES

Drive Control Unit
for the electronic architecture
of the modular electric
drive matrix (MEB)

AUTONOMOUS MOBILITY AND SAFETY

Brake Hoses
(front axle)

Chassis Control Unit

Drum Brake
with electric parking brake
function (EPB-SI)

Chassis Acceleration Sensors

Intelligent Battery Sensor

Wheel Speed Sensor

Long Range Radar

VEHICLE NETWORKING AND INFORMATION

Body High Performance
Computer
In-Car Application
Server (ICAS1)

Body
Control Unit

Center Display

Memory Seat Module/
Seat Positioning Unit

Door
Control Unit

CONTITECH

PVC Artificial Leather
(Acella)*

Battery Thermal
Management**
Plastic lines to
thermoregulate the battery

Air Conditioning and
Heatpump**
R744 refrigerant fluid lines
for cooling and heating

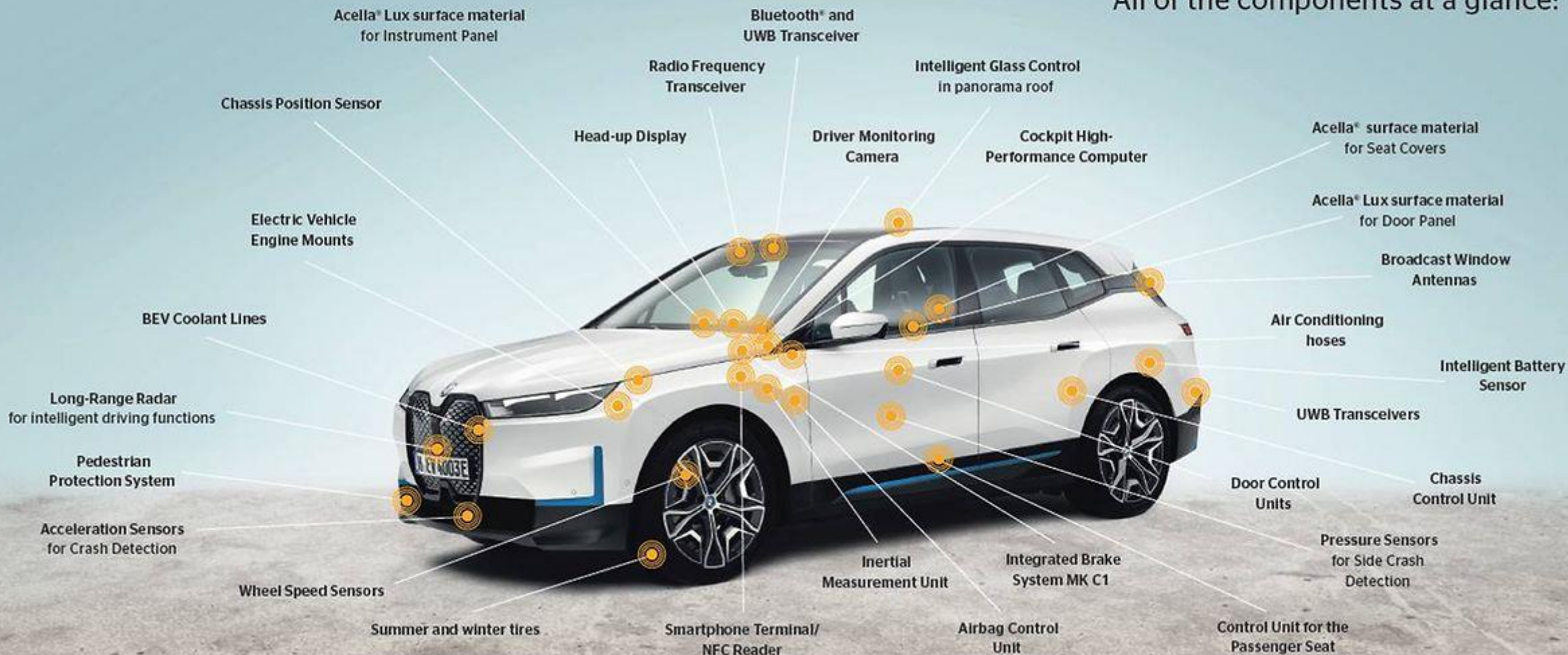
Yorn Light
Foam laminate



*in North America only **in EMEA and Americas only

THERE'S A LOT OF CONTINENTAL IN THE NEW BMW iX

All of the components at a glance:



Global **Continental** team as a **strong core**

> **190.000** employees

including

≈ **42.000** engineers

≈ **19.000** software and IT specialists

≈ **1.000** employees in artificial intelligence



Working at Continental

Accompanying Digital Transformation.

We regard four management areas as crucial to our continued success with digitalized industry and mobility:

- › **Diversity management**
- › **Flexible working conditions**
- › **An inspiring leadership culture**
- › **Lifelong learning and intensive exchange of knowledge**



Systematic pursuit of sustainability



2020 adoption of one of the most comprehensive sustainability roadmaps in the vehicle supplier industry

Since **2020** 100 percent procurement of green electricity at all plants

By **2040** carbon neutrality throughout all in-house production

At the latest by **2050** carbon neutrality along the entire value chain

527 Locations in 58 Countries and Markets

- › Argentina
- › Austria
- › Australia
- › Belgium
- › Botswana
- › Brazil
- › Canada
- › Chile
- › China
- › Columbia
- › Costa Rica
- › Czech Republic
- › Denmark
- › Ecuador
- › Finland
- › France
- › Germany*
- › Ghana
- › Greece
- › Hungary
- › India
- › Indonesia
- › Ireland
- › Israel
- › Italy
- › Japan
- › Kazakhstan
- › **Lithuania**
- › Luxembourg
- › Malaysia
- › Mexico
- › Morocco
- › Netherlands
- › Norway
- › Peru
- › Philippines
- › Poland
- › Portugal
- › Republic of South Africa
- › Romania
- › Russia
- › Saudi Arabia
- › Serbia
- › Singapore
- › Slovakia
- › Slovenia
- › South Korea
- › Spain
- › Sri Lanka
- › Sweden
- › Switzerland
- › Taiwan (China)
- › Thailand
- › Turkey
- › United Arab Emirates
- › United Kingdom
- › USA
- › Zambia

* Headquarters in Hanover

As at: Dec. 31, 2021



DETROIT



HANOVER



SHANGHAI

The Continental logo is displayed in yellow at the top center of the building facade. It features the word "Continental" in a bold, sans-serif font, followed by a stylized yellow silhouette of a horse's head.A semi-transparent yellow banner is positioned in the lower right quadrant of the image. It contains the text "Kaunas Location" in a bold, black, sans-serif font. The banner is overlaid on the photograph of the building and its surroundings.

Our Story

2017

2018

2019

2020

2021

2022

Biggest greenfield investment in the history of Lithuania

Ground-breaking

Plant Opening

LEED GOLD certified

First 1 million components manufactured

Expansion; 500 employees



Our Story In Kaunas

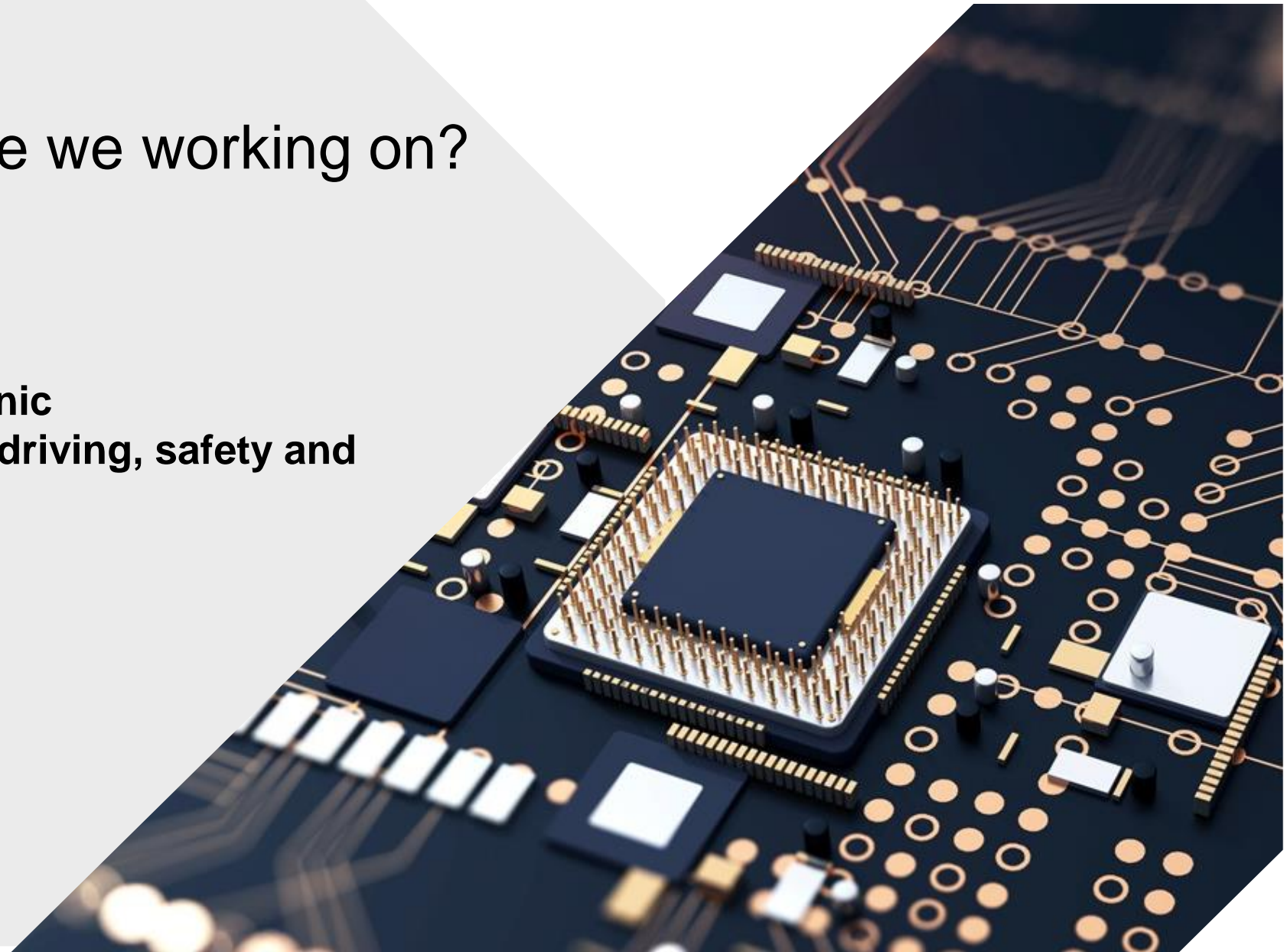
- › The biggest foreign greenfield investment in history of Lithuania.
- › Opened in 2019, Kaunas FEZ.
- › Total investment of 190+ million EUR.
- › Manufacturing electronic components to biggest car brand names.



Our Products

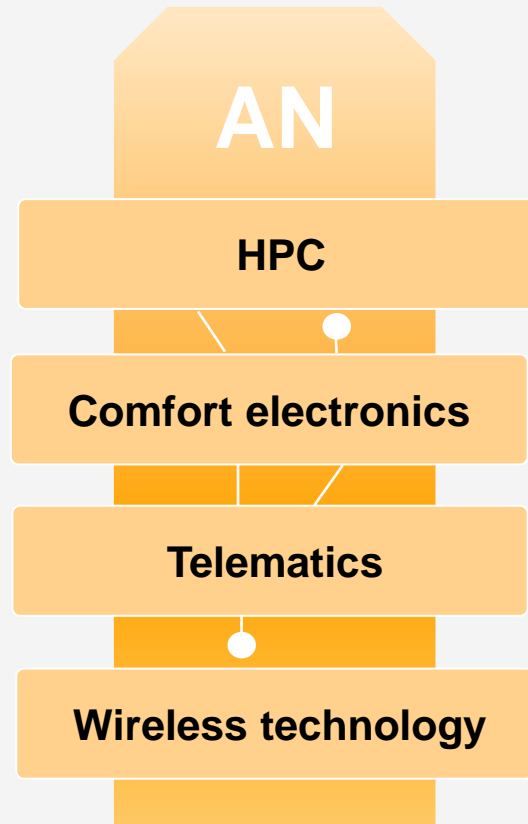
What technologies are we working on?

We are manufacturing electronic components for autonomous driving, safety and comfort.

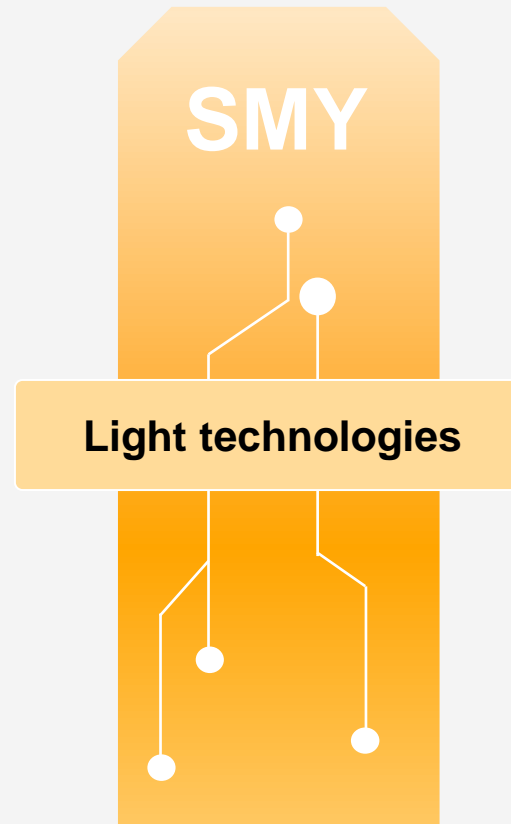


Technologies in Kaunas Plant

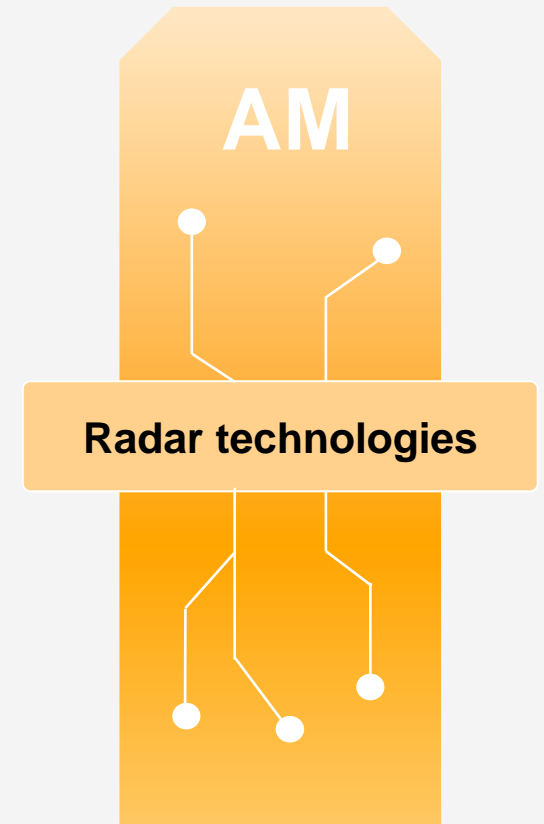
Building Core Competences in Technology



AN - Architecture Networking



SMY – Smart Mobility



AM – Autonomous Mobility

Our People Diversity

Employees from all around:

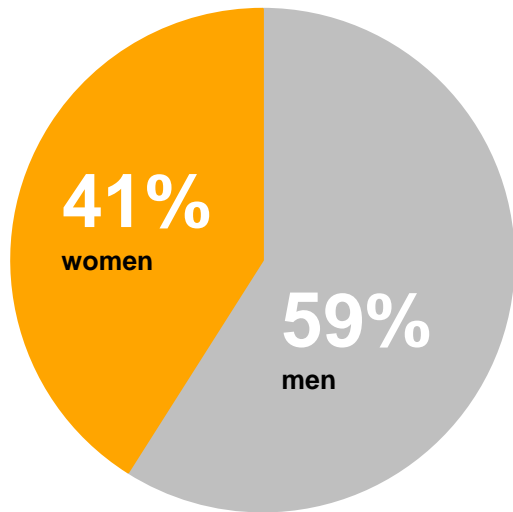


Our People

Diversity

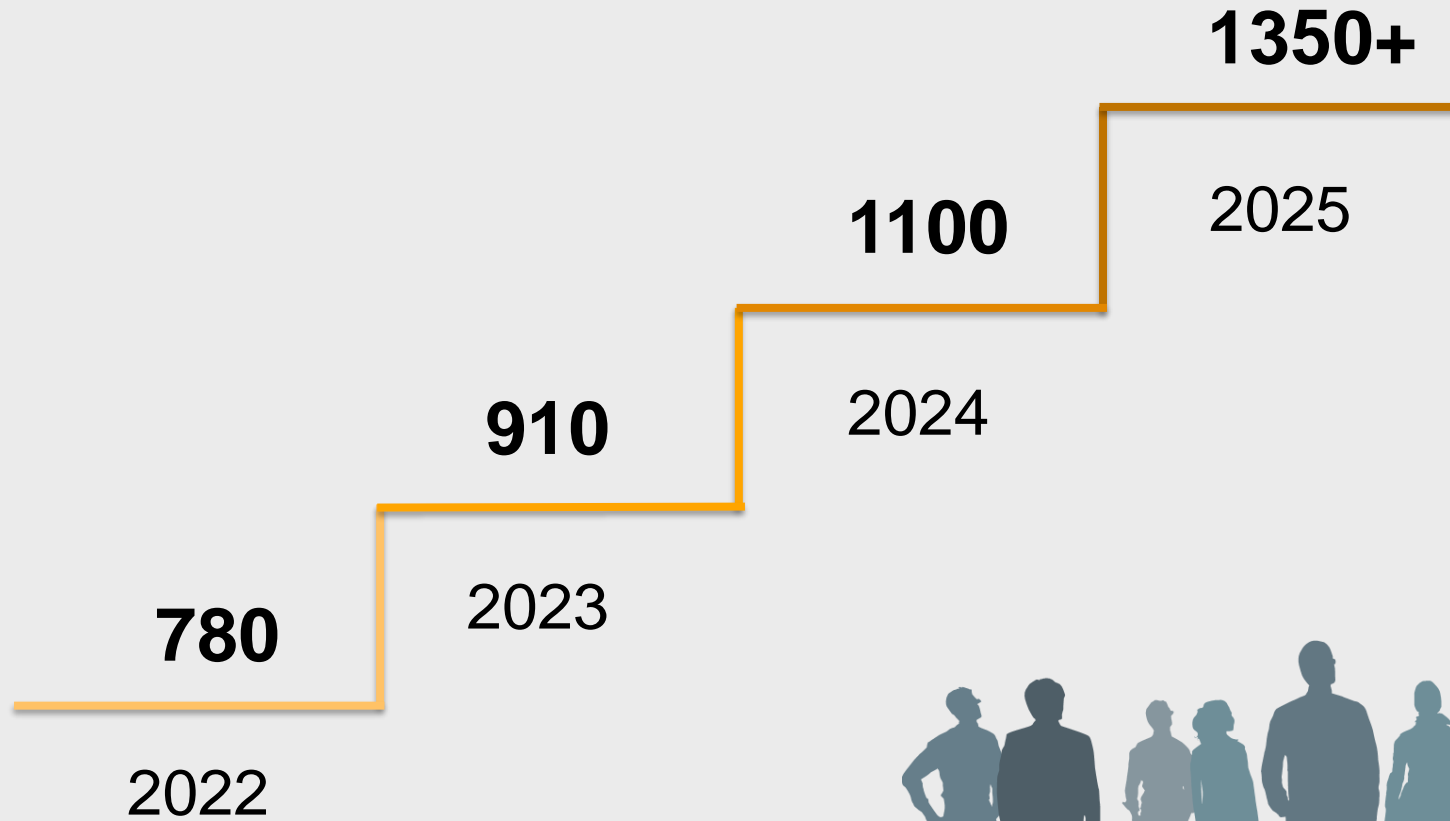
31 average age

18 nationalities



Our People

Hiring Plans



Plant Kaunas

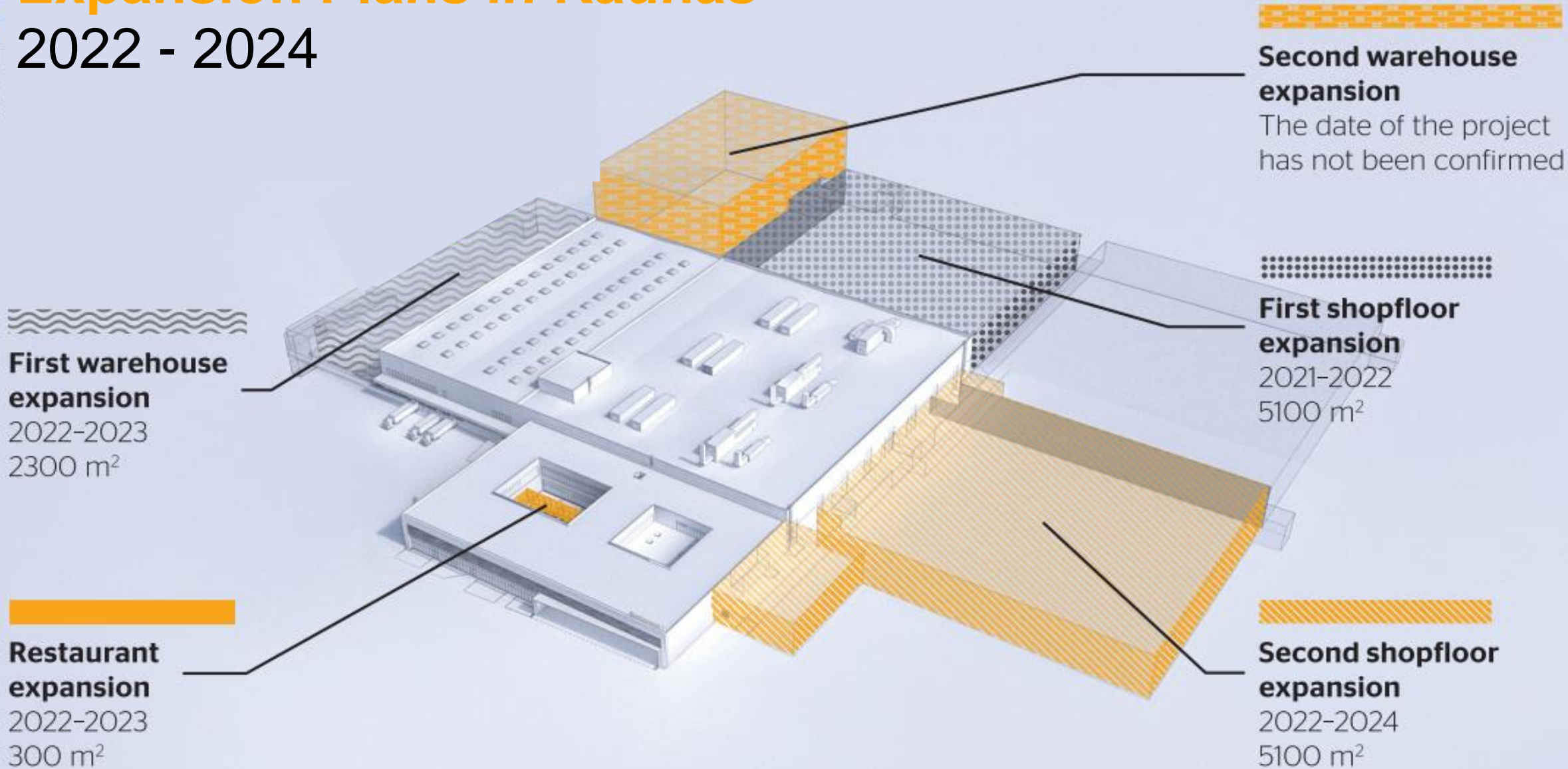
Sustainable Building

- › LEED Gold certified
- › Industry 4.0 plant
- › 100% renewable energy use
- › Attractive work environment



Expansion Plans in Kaunas

2022 - 2024



Plant Kaunas

Work Environment



Plant Kaunas

New Office World



Plant Kaunas

Production Area



Continental 

The Future in Motion